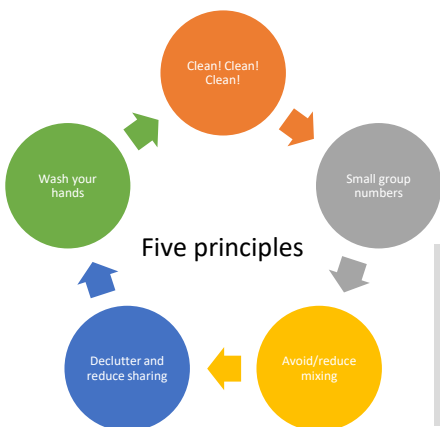
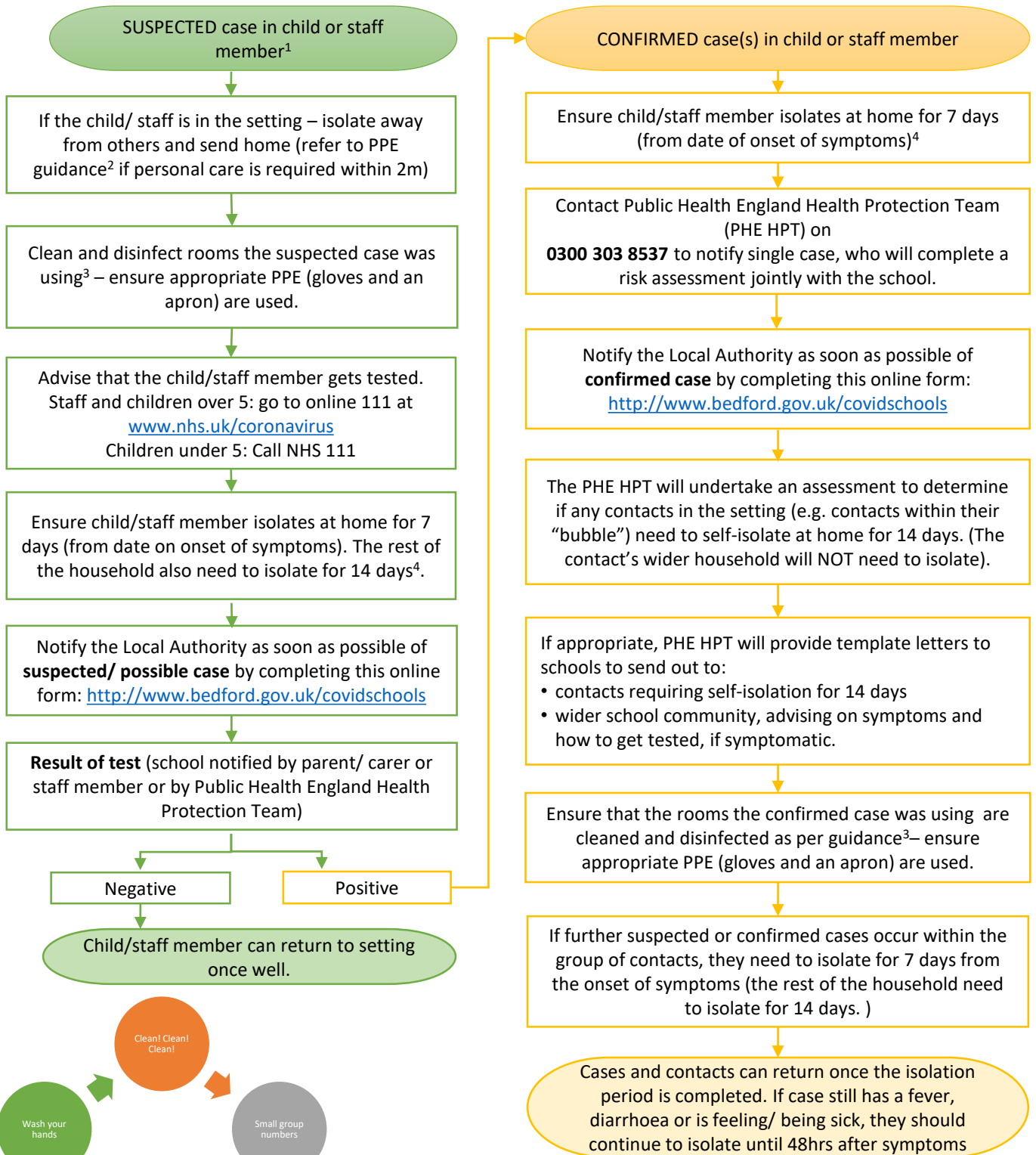


Guidance for management of Covid-19 in Schools (June 2020)

- If you have any general questions or concerns, please contact the School Nursing Team on 0300 555 0606 (SPA) or ccs.beds.childrens.spa@nhs.net
- To notify a case(s), please call the Public Health England Health Protection Team on 0300 303 8537. If the matter is not urgent you can also email EoE.CRC@phe.gov.uk
- This flow chart reflects the COVID-19 schools guidance: Implementing protective measures in education and childcare settings and can be accessed [here](#)



- 1: Suspected case: staff member or pupil with a new continuous cough and/or high temperature and/or a loss of, or change in, normal sense of taste or smell (anosmia)
- 2: [PPE Guidance](#)
- 3: [Cleaning in non-health care settings](#) after a suspected or confirmed case
- 4: [Stay at home guidance](#)