

# WOOTTON ACADEMY TRUST

Tuesday 24th March 2020

Dear Parents/Carers

## Numbers of WAT children at school today

We had **eight children in school today** at Wootton Upper School; this reduction, from seventeen children on Monday, mirrors what is happening in other local schools in our admissions area, and also nationwide. My thanks to over twenty WAT staff who were in school today, including senior leaders, teachers, support staff, administration, catering, estates and cleaning staff. In total, across the six lower schools, two middle schools, alongside Wootton Upper and Kimberley College there were a total of one hundred and one children in school. One school had thirty-seven children, three schools had between ten and nineteen children [seventeen, fourteen and ten], five schools had fewer than ten children [ eight, five, five, four, one and zero]. I am keen to work with our local schools to see if we can work collaboratively in the days and weeks ahead as this will reduce the number of staff required to support these children. The current arrangements remain in place at least for the time-being.

Once again we made a tour of the catchment villages; **today we noticed more children seemed to be outside and in Cranfield there was a large group of children congregating together**. This is worrying, and we would urge all parents/carers to reinforce the need for social distancing. This evening senior NHS workers were on the radio news using adjectives to describe what is going to happen in the UK in the coming weeks. **Words such as “terrifying” and “frightening” and “scary” worried me**. NHS workers are pleading for everybody to change their behaviour to avoid the **“tsunami”** on the horizon.

## Update on pupils and students accessing Show My Homework [SMH]

Mr Frazer and Dr Mackay report on pupils and students who have logged into *SMH* today.

Wootton Upper School	Year 9	Year 10	Year 11	Total
Logged in between midnight and 5:00pm today	251 (83%)	264 (84%)	158 (57%)	673 (76%)
Have not logged in since Thursday (the work was set to go live on Friday)	17 (5.6%)	15 (4.8%)	30 (10.8%)	62 (7.0%)

Mr Frazer, Vice Principal at Wootton Upper School comments ...

*“we are concerned regarding the low percentage of Year 11 pupils who have accessed work today; we know that many of them will want to take GCSE exams when school re-opens, and in any event, the predicted grades that staff will give will be influenced by the work pupils should be doing and returning to teachers currently.*

*It is really important that parents/carers help us to get this message across to our students.”*

Kimberley College	Year 12	Year 13	Total
Logged in between midnight and 5:00pm today	193 (69%)	116 (43%)	309 (57%)
Logged in since midnight on Monday 23rd March	248 (89%)	218 (82%)	466 (85%)
Have not logged in since Thursday (the work was set to go live on Friday)	11 (4%)	20 (7%)	31 (6%)

Dr Mackay, Assistant Principal at Kimberley College comments *“given the nature of the Sixth Form timetable with the number of subjects and the regularity of subjects, students may not need to review SMH as regularly i.e. daily, although this would clearly be preferable. It is worth noting that 59 students would not normally have any lessons on a Tuesday at all, but are included in this data to have consistency of the full cohort.”*

Using the data in the tables above, we have started to contact children who are not accessing work. Please let us know if there is a good reason your child has not logged in to the platform. It could be they are ill or they have forgotten their password or some other reason. In the first instance we need to reach a target of 90% accessing work and then move up from that point.

I promised that we would share excellent work when it is uploaded. One of our Year 11 art pupils, **Shannon McConnell** has created a PowerPoint on the theme of “Beat Banksy” incorporating her own art work linked to Coronavirus. Shannon’s work made a big impact on me when Mrs Wetherell, Head of Art, forwarded it to me today. It would make a great assembly PowerPoint and I would recommend you all look at it. I am waiting for teachers in other departments to send me similar work to share with you. Well done Shannon.

### Wootton Upper School and Kimberley College websites

Our thanks go to Mr Freemantle for adding a **Coronavirus Distance Learning** section to the website which includes all of the information we are sending to you through this crisis.

### Year 8 options and Year 9 options

Our current Year 9 pupils should have chosen their option subjects for GCSE and submitted them to Mr Freemantle using the electronic form we created for the purpose.

**Parents and carers of Year 8 children joining Wootton Upper School should have received a letter today by email advising them information about Year 9 options is on the Wootton Upper School website.** The information includes a video outlining the content of the choices available to the children. The electronic options form for Year 8 children should be returned by Monday 30th March.

### Staffing matters

Whilst not naming either individual concerned, to save their embarrassment, I want to share with you on two *fantastic* individuals who are due to join our team of staff at the Trust. Both contacted our HR Officer, Ms Patel, today, to ask if they could delay their start date, given the school and college is closed to children. The reason both individuals gave was that they are key workers: one in the NHS and one in Social Care. Both are doing really important work to keep others safe. I wanted to cry when Ms Patel asked me if I would agree to deferring their start dates. I agreed immediately, as anybody else would have done, confident in the knowledge that when these individuals start their roles at the Trust, our children will have benefit from the care and support of two outstanding role models. I was truly humbled.

Finally, in these exceptional times, tomorrow we start a series of interviews for posts for September, using video conferencing and other on-line assessments. We are in interesting times. We have a range of posts to fill.

Thank you for your ideas and suggestions and good wishes. Please keep safe and well.

Yours sincerely

Michael Gleeson  
**Executive Principal**  
Wootton Academy Trust

Wootton Academy Trust operates:  
Wootton Upper School & Arts College  
Kimberley 16-19 STEM College  
Registered in England and Wales  
Company No. 7740758

Wootton Academy Trust  
Hall End Road, Wootton  
Bedford, MK43 9HT.  
01234 767123  
Email: [wootton@wootton.beds.sch.uk](mailto:wootton@wootton.beds.sch.uk)  
[www.woottonupper.co.uk](http://www.woottonupper.co.uk)  
[www.kimberleycollege.co.uk](http://www.kimberleycollege.co.uk)



# BEAT BANKSY

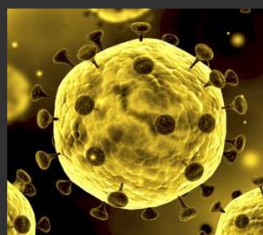
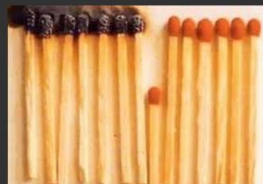
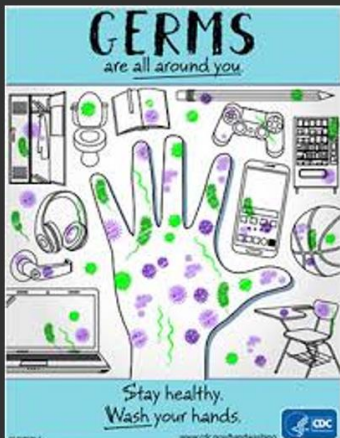
## Art challenge

### WHO IS BANKSY?

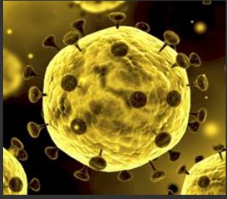
Banksy is an anonymous England-based street artist, vandal, political activist, and film director, active since the 1990s. His satirical street art and subversive epigrams combine dark humour with graffiti executed in a distinctive stencilling technique. His works of political and social commentary have been featured on streets, walls, and bridges of cities throughout the world. Banksy's work has political and social undertones. Banksy's political stance is anti-war and anti-consumerism. His work was featured in an Academy Award nominated documentary, has been featured in many museums and galleries, and has been purchased by celebrities. Banksy employs juxta positioning in his work to make a statement. His work often combines unexpected elements blended together.

### MOOD BOARD

- Masks
- Washing hands
- Isolation
- Virus
- Illness
- Coronavirus
- Hands
- World
- Spreading
- Covid-19



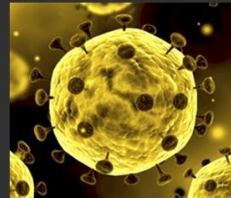
# IDEA 1



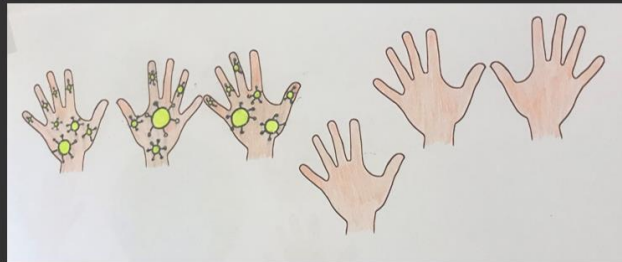
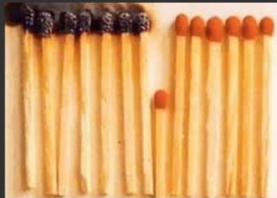
A single hand which contains the Coronavirus cells. I decided to do this because it shows what your hand will look like, even though you can't see anything. It shows everyone that you need to wash your hands.



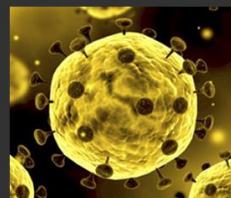
# IDEA 2



It shows people that if you isolate and keep away from people you won't get the virus or spread it to anyone around you. I decided to use my first idea of the Coronavirus germs to show the spread across people. I really like this matchsticks example because it uses a different point of view but it links to the Coronavirus.



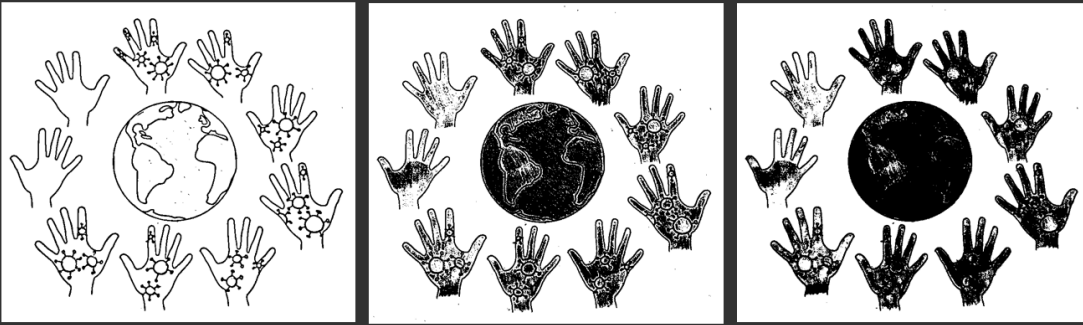
# IDEA 3



This improved design is showing the effect it has on the world and the spread of the virus. I decided not to put the virus germs on all the hands because I wanted to show that some countries are not affected, but will be if we don't do anything about it.

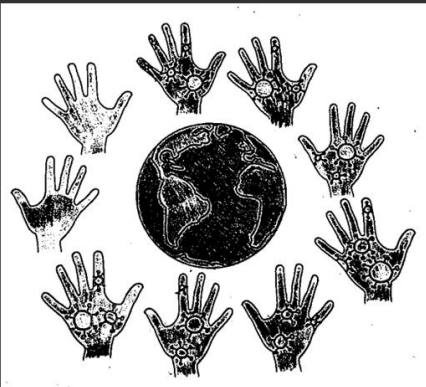


# EXPERIMENTATION



Using the tools on PowerPoint I created my work in the style of Banksy. I think these designs are creative but, to improve them, I would add colour to make them more noticeable to understand what the drawings are expressing.

# FURTHER EXPERIMENTATION



I used this effect and printed the image out and added colour to the drawing. I used a highlighter to shade in the viruses and I also used an orange pencil to colour in the white areas on the earth. To improve this design I would add text to show what the aim of the work is.

